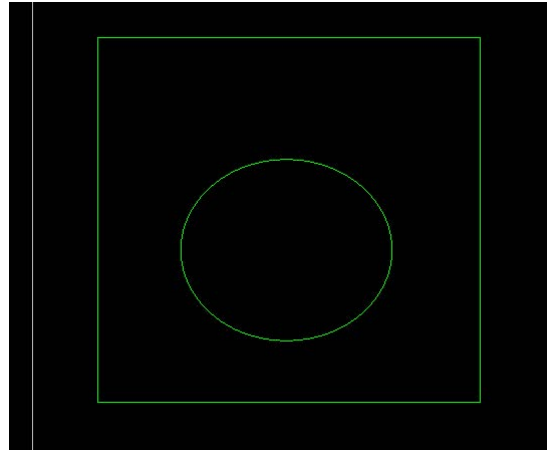


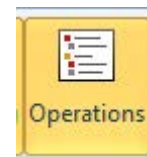


# How To Set Up Truly Automatic Support Tags

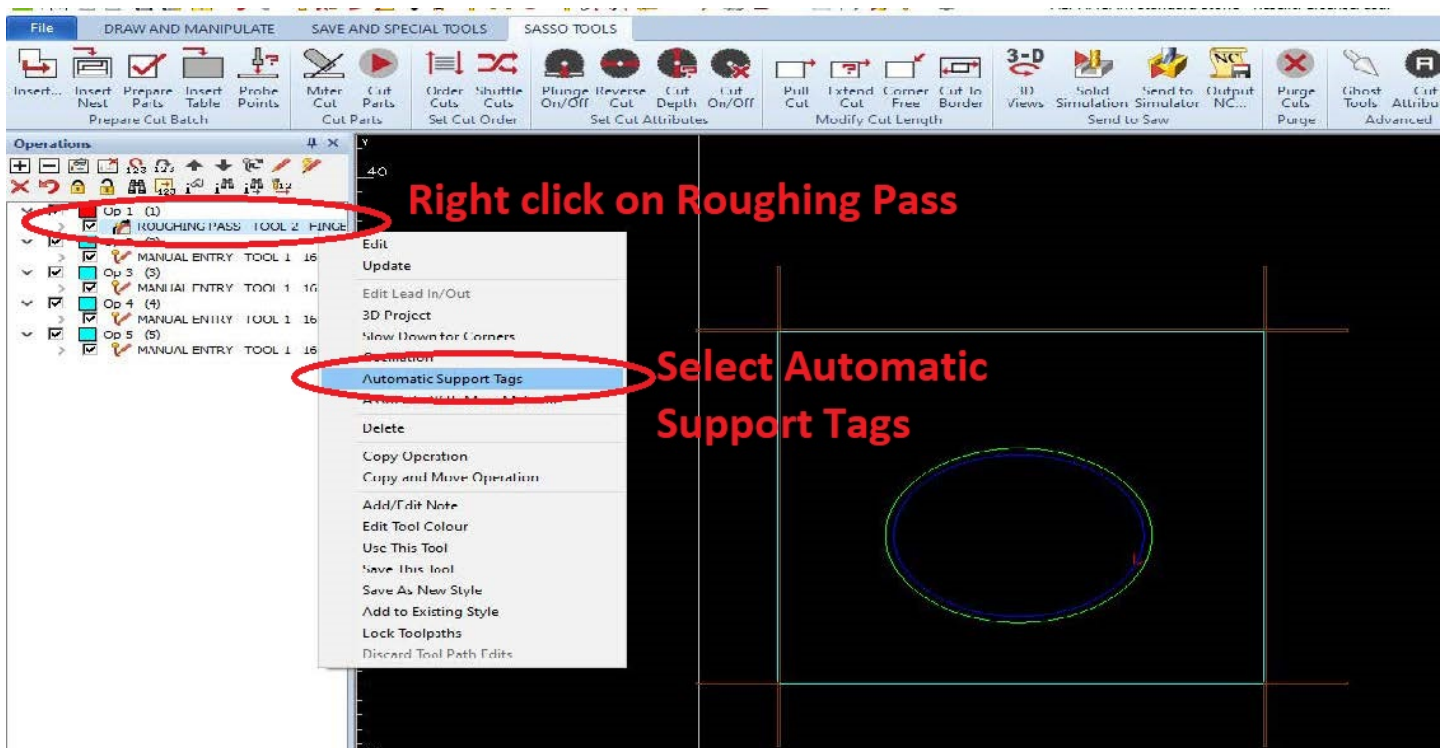
- Start by drawing an Oval Sink



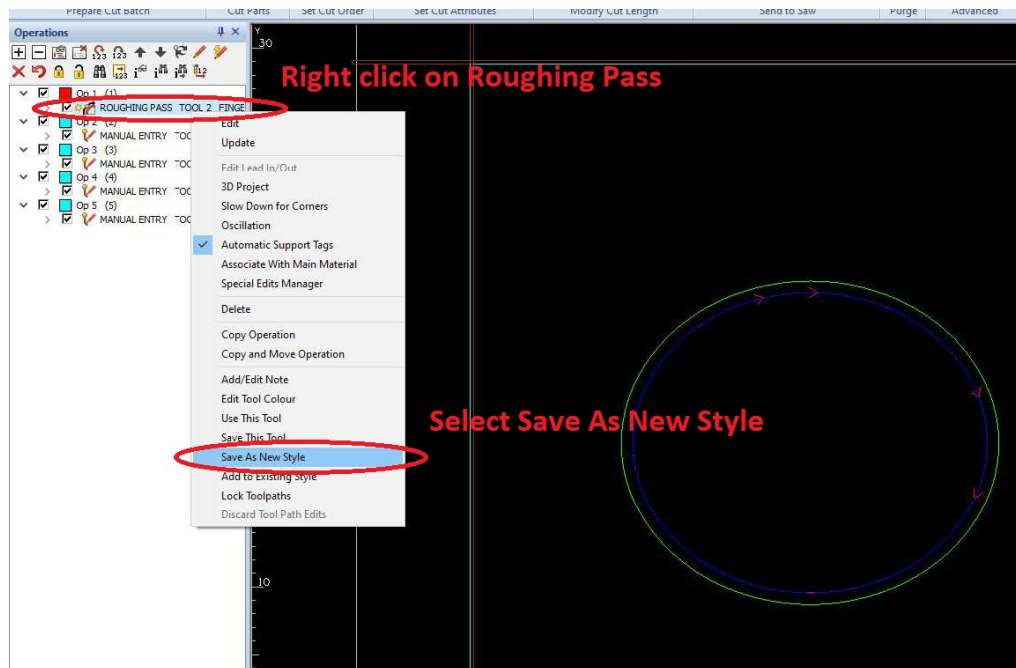
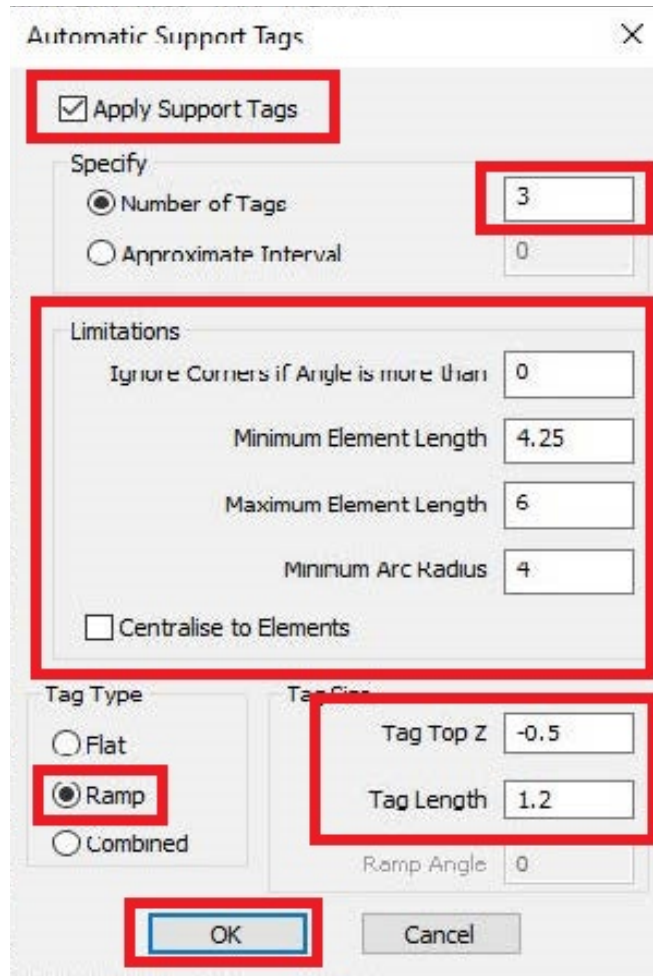
- Insert Table and Run Cut Parts
- Navigate to Operations



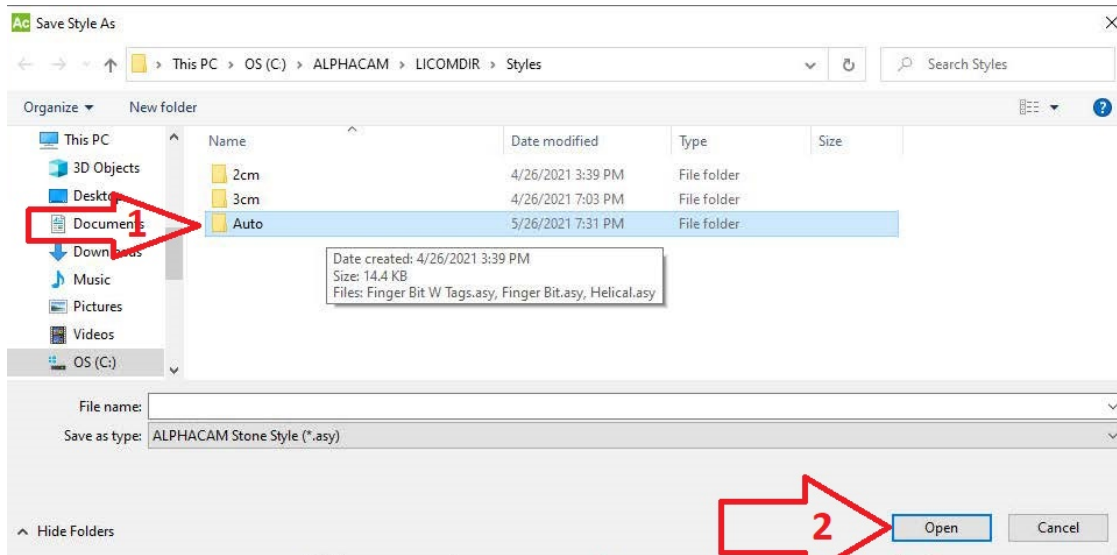
- In Operations find your oval sink, then right click on the roughing pass and select Automatic Support Tags



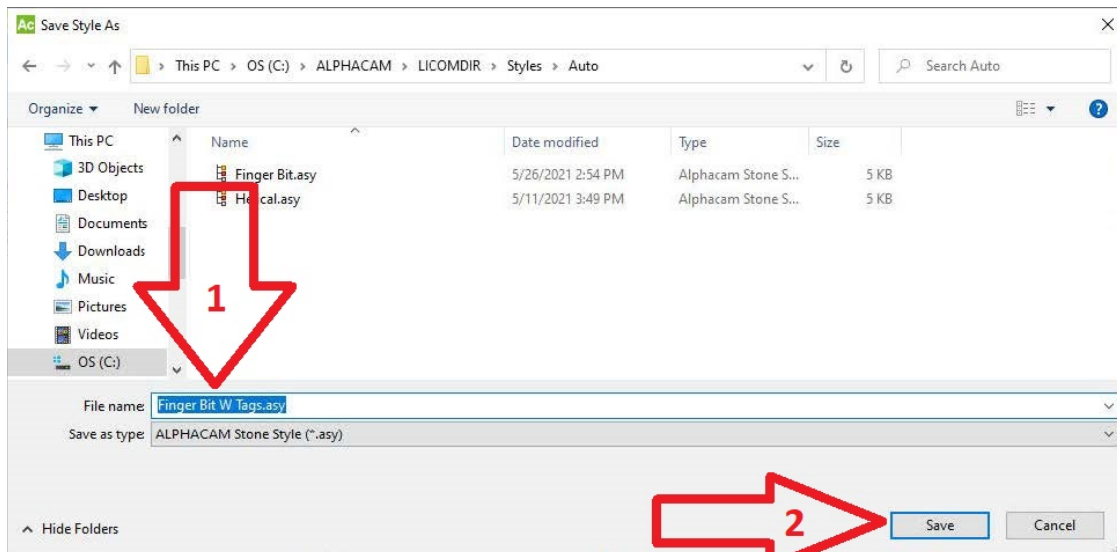
- Insert your desired support tag settings (DO NOT FORGET TO ADD THE LIMITATIONS) then click OK.



- Select Auto and click Open



- Type in a File Name and click Save



- Go to Cut Parts and select your new Fingerbit Style

