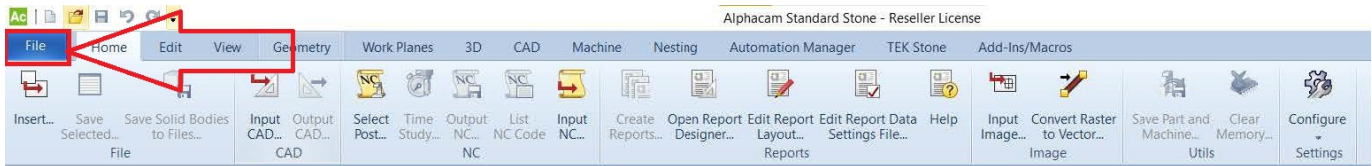


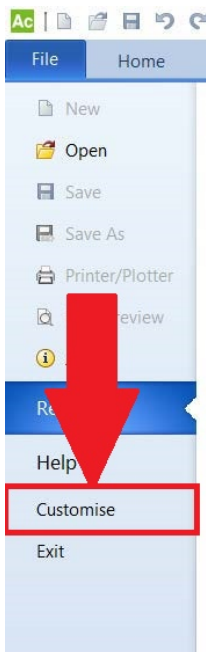


# How To Import your Toolbar Into Alphacam

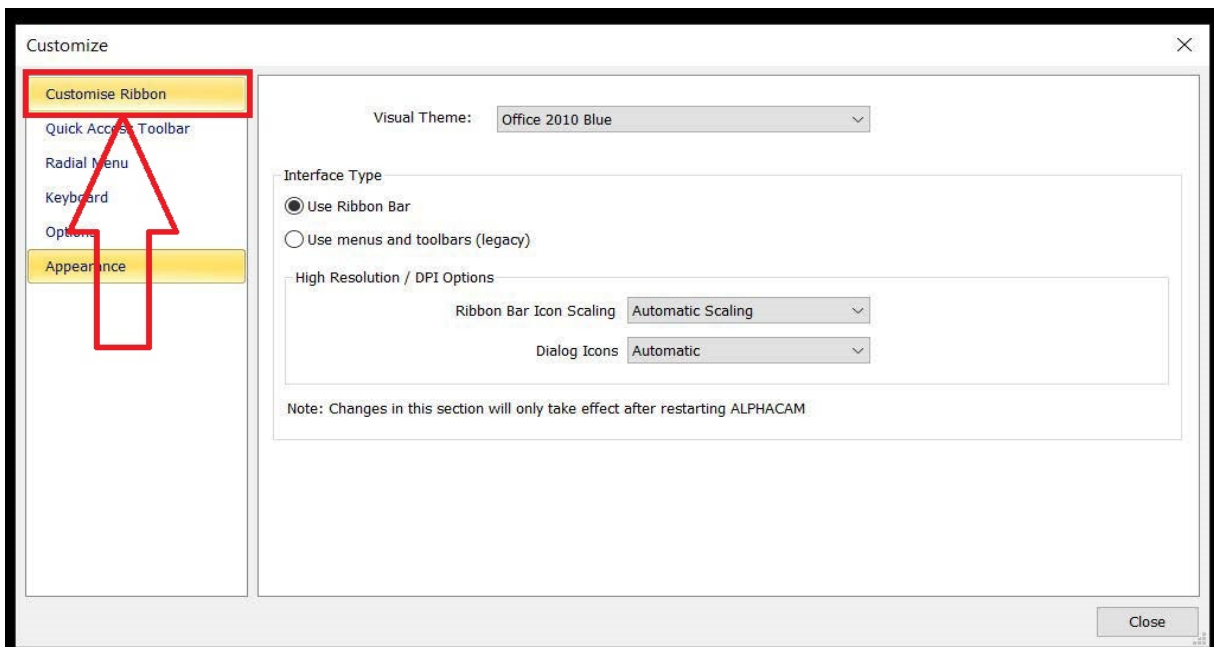
- Open Alphacam and click on File



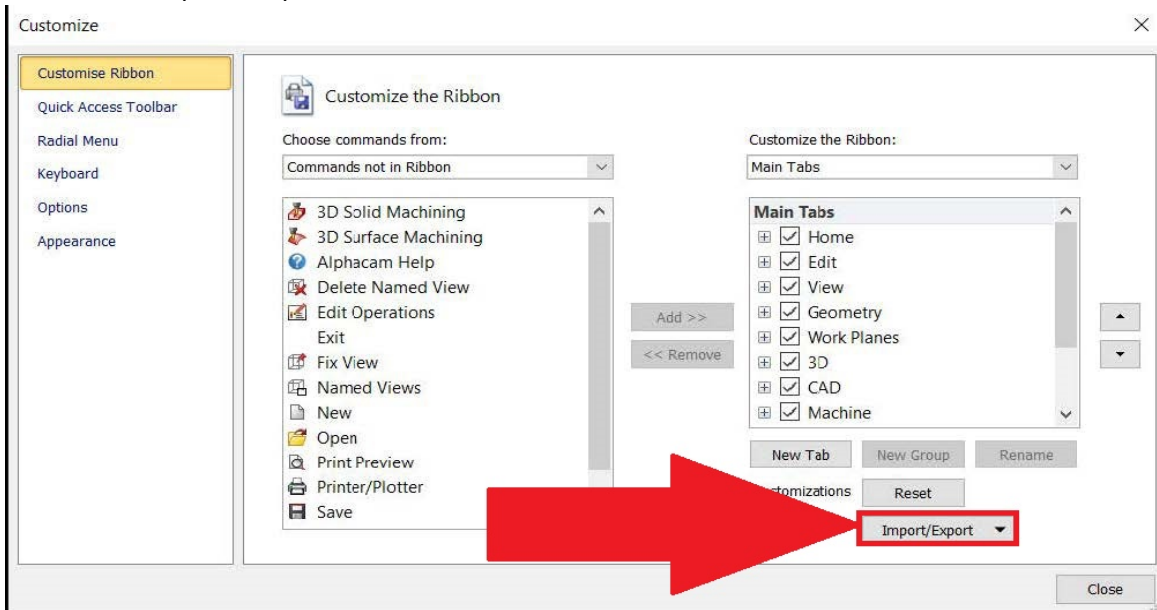
- Click on Customize



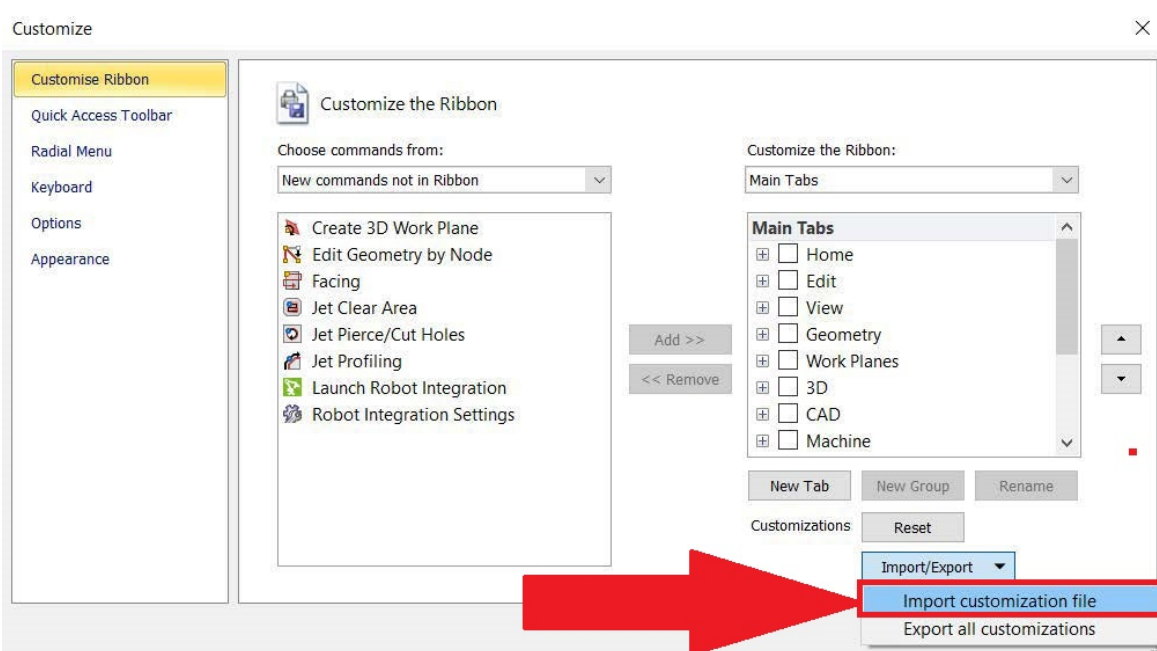
- Click Customize Ribbon



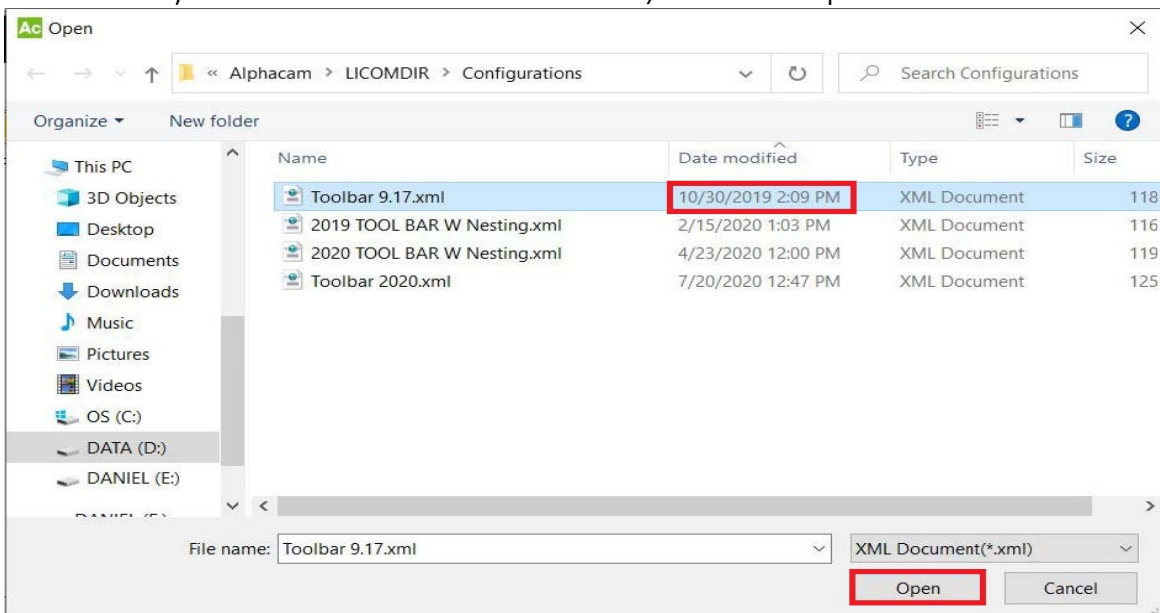
- Click Import/Export



- Click Import customization file



- Select your toolbar. (we chose Toolbar 9.17, but your toolbar might be different. Look at the most recently modified toolbar if that's the case). Then Click Open



- If you get some error messages click OK.
- After your toolbar is loaded, use Rectangle then draw and save a square (we need to save something in Alphacam so the new toolbar doesn't revert back).
- After Saving, close and reopen Alphacam.

